
User Interface Changes

*for HP 16600A/16700A-series logic analysis
systems - Version A.01.40.00 and higher*

This covers:

- Sampling Tab
- Setting Up State Mode Clocks
- Format Tab
- Trigger Tab

Hewlett-Packard Company
Printed in the USA

Manual Part Number
B3760-92002, December 1999



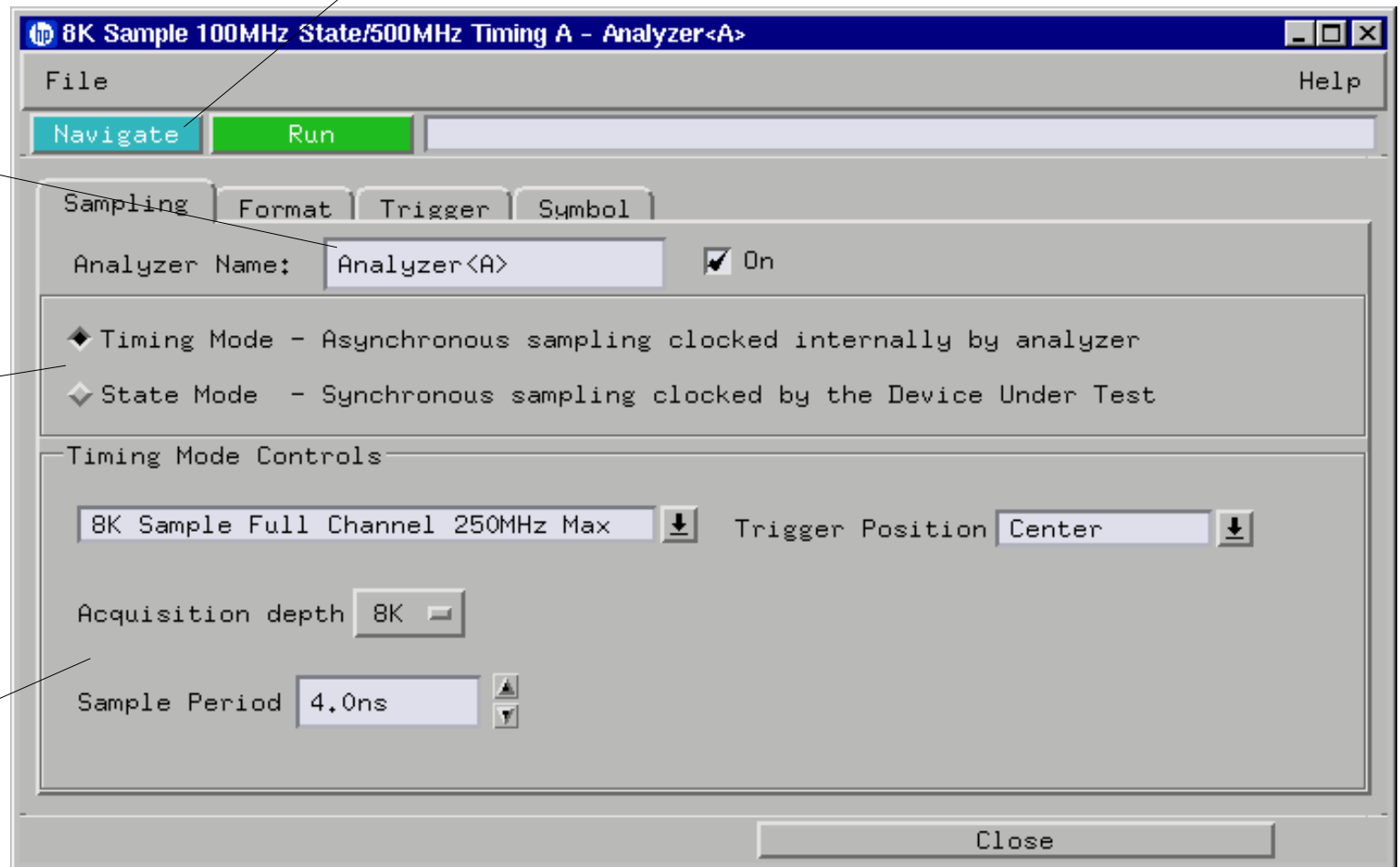
Sampling Tab

To use the other Analyzer, click on the Navigate button and select "Activate Modules". You will see another analyzer in the same slot as the current one ("Analyzer <A2>"). This will open another Setup dialog for the new Analyzer.

Enter the Analyzer name here. "Analyzers" are the new name for "Machines".

Choose timing or state mode.

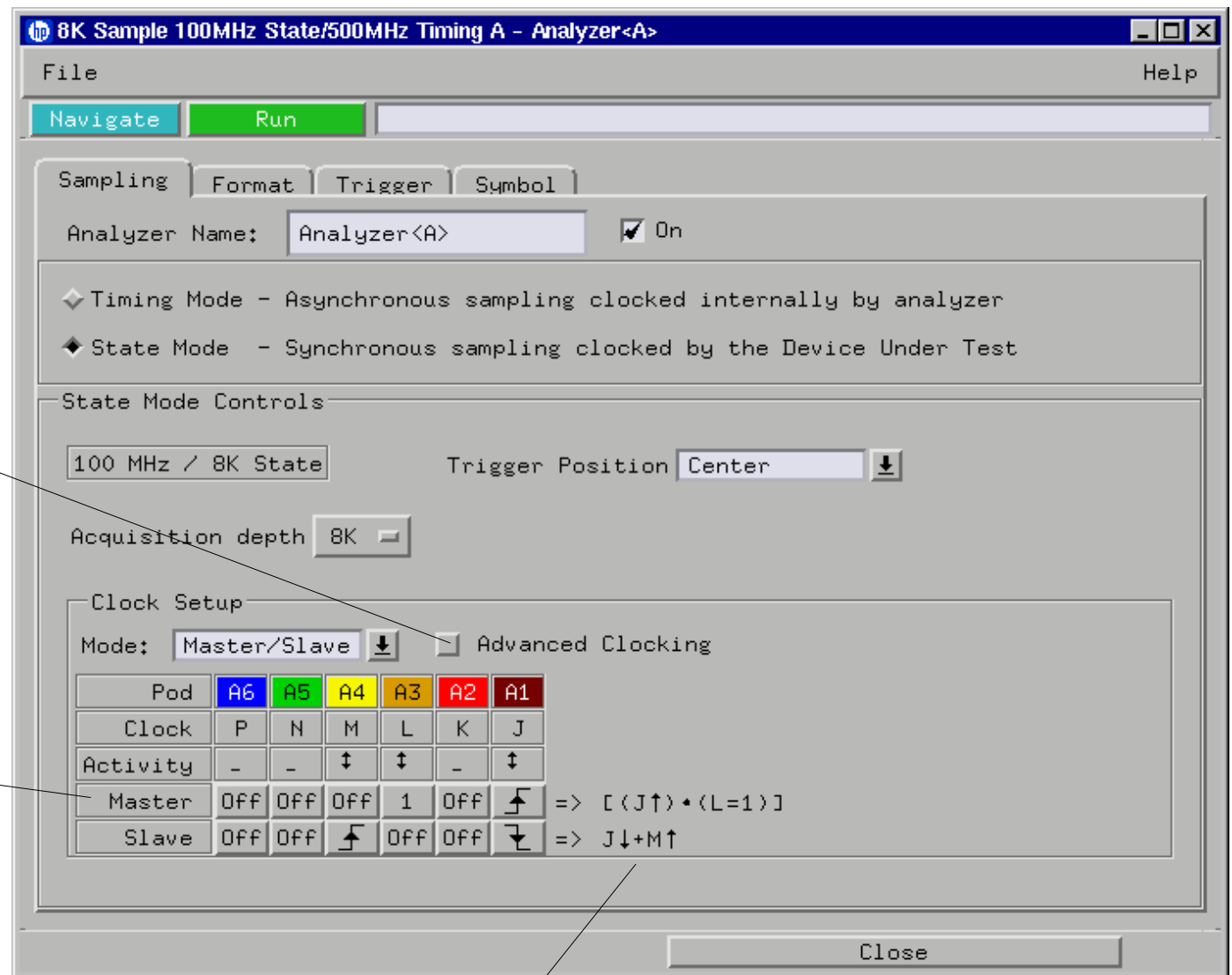
In this area, enter all of the information for the selected mode.



Setting Up State Mode Clocks

Check here to use the Advanced Clocking dialog, which is the same as the Clocking dialogs in previous versions. Use the Advanced Clocking dialog to use OR'ed qualifiers.

This table simplifies setting up State Clocks. If using Master/Slave or Demultiplex modes, you still need to specify which pods use the slave clock or are demultiplexed in the Format tab.

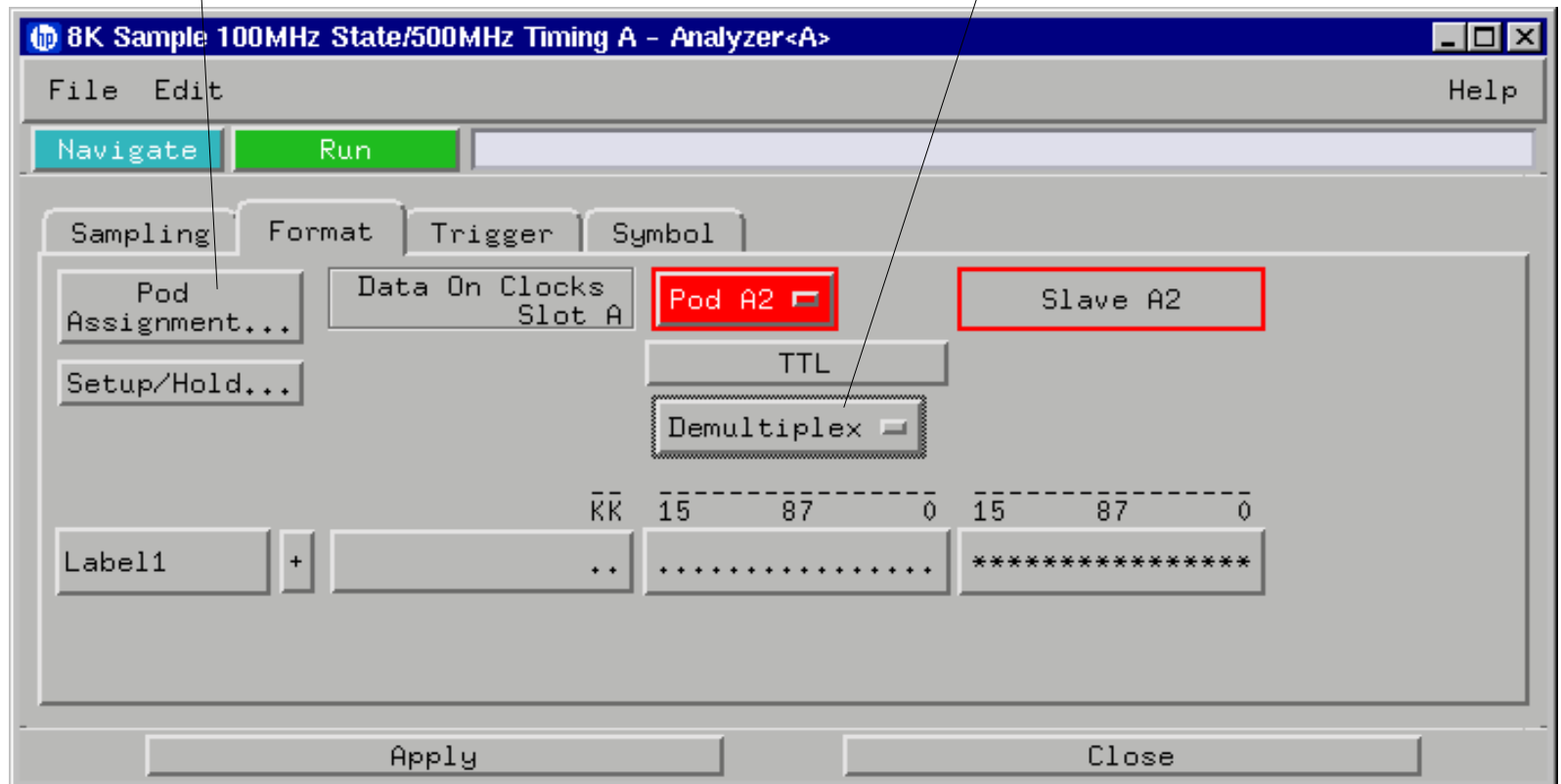


The clock equations reflect the selected clocks.

Format Tab

Click here for the Pod Assignment dialog which is the same as the Config Tab in previous versions.

Select Master, Slave or Demultiplex here. It's not enough to specify the state clocks in the Sampling Tab.



Trigger Tab

Functions are same as "Macros" in previous versions.

To see the matching graphic, single-click a function.

To replace the selected sequence level, double-click a function.

The "user level" function is at the bottom of the list.

The yellow box indicates which sequence level is selected.

File Modify Clear Help

Navigate Run

Sampling Format Trigger Symbol

Trigger Functions Pattern Range Timer Settings Save/Recall

Find Pattern n times
Find anystate n times
Find pattern2 occurring immediately after pa
Find pattern2 occurring too soon after pa
Find pattern2 occurring too late after pa

Occurrence 1 Occurrence n
pattern pattern

Replace Insert before Insert after Delete

1 While storing "anystate"
TRIGGER on "Pattern1" 1 time

2 Store "anystate"

Close

These buttons use the currently selected function.

Summary

- “Machines” have become “Analyzers”. The default names of the analyzers are “Analyzer <Slot>” and “Analyzer <Slot2>”. For example, if a module is in Slot A, then the analyzers are “Analyzer <A>” and “Analyzer <A2>”.
- To activate a second analyzer, click on the navigate button, and choose “Activate”.
- The new Sampling tab contains all information related to when the logic analyzer will take a sample, including the selection of Timing or State Modes.
- The Config Tab has become the Pod Assignment dialog. It is accessed via a button in the Format tab.
- Trigger “macros” have become trigger “functions”.
- Click on a trigger function in the list; then, click on the “Replace”, “Insert Before”, or “Insert After” buttons. Double-clicking on a function is a short cut for “Replace”.
- The “User Level” function is at the bottom of the list.